

FRACAS+

Failure Reporting Analysis and Corrective Action System Software

Isograph's FRACAS+ software provides a powerful and adaptable environment to process and analyze system equipment failures, repair activities and corrective actions. The system allows the management of equipment for any size of installation and any number of sites, making it very simple to analyze trends in system performance and equipment reliability and to identify strategies for improvement.

Our customizable data sheet structure has been developed to cover the needs of small companies through to large enterprises. All failures can be simply tracked and analyzed, allowing the root causes to be quickly determined and, following this, corrective actions can be assigned and implemented. FRACAS+ has the power to implement a fully 'Closed-Loop' process, thus greatly improving the through-life reliability of the target system.



KEY FEATURES

- Powerful environment to record, analyze, correct and report on equipment failures
- Windows- or Web-based versions available
- Capable of handling equipment from any size of installation and any number of sites
- Multiple data sheets offer simple and intuitive method for data input and retrieval
- Corrective actions can be defined and completed, thus 'Closing the Loop'
- Repair reports allow immediate identification of equipment location at time of failure
- Generate E-mail notification when records are updated, inserted or deleted
- Directly analyze failure report data with the Weibull Analysis facility
- Advanced reporting facilities, including a Report Wizard
- Custom reports linking to Microsoft Office products
- Import and export facilities to transfer data from and to Microsoft Office and other Isograph products

isograph

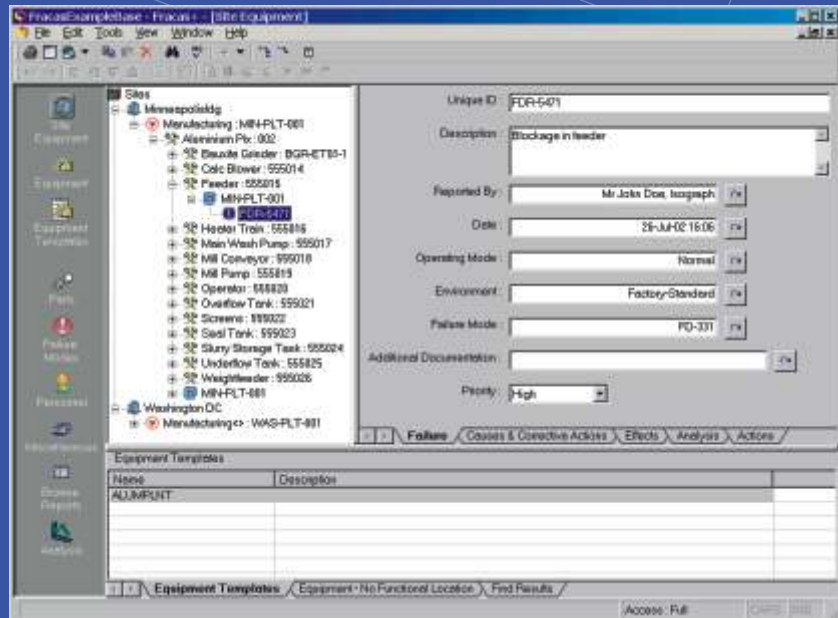


The Future Assured

Fully Customizable

Managing the FRACAS+ database could not be easier. The database can be set up in the way that suits your needs. System equipment can be assigned to any number of locations at any number of sites, or simply included as a unique item with failure and repair reports attached. Your FRACAS+ administrator will have the ability to create and adapt user logins to ensure that each person can have as much (or as little!) power to adapt the database as is required.

Furthermore, FRACAS+ allows users to fully configure the data sheets through which the data is entered and retrieved. This includes not only adapting the default fields, but also adding custom fields. This Screen Designer gives the user the capability to hide or modify field attributes and also to change the position of both existing and custom fields. This means that FRACAS+ can be optimized to suit the needs of any type of project.



Intuitive Format

FRACAS+ is divided into a number of main data sheets, allowing simple and logical input of data. The Site Equipment data sheet allows the Fracas information itself to be recorded using a tree hierarchy based on sites, functional locations, equipment, equipment location histories and failure/repair reports. Corrective actions and causes are recorded below the failure reports. All project data may be input through this main data sheet, but several other sheets assist this process. This ensures that, no matter how large the project might become, all information can be immediately located and updated and new data added.



Data Tracking

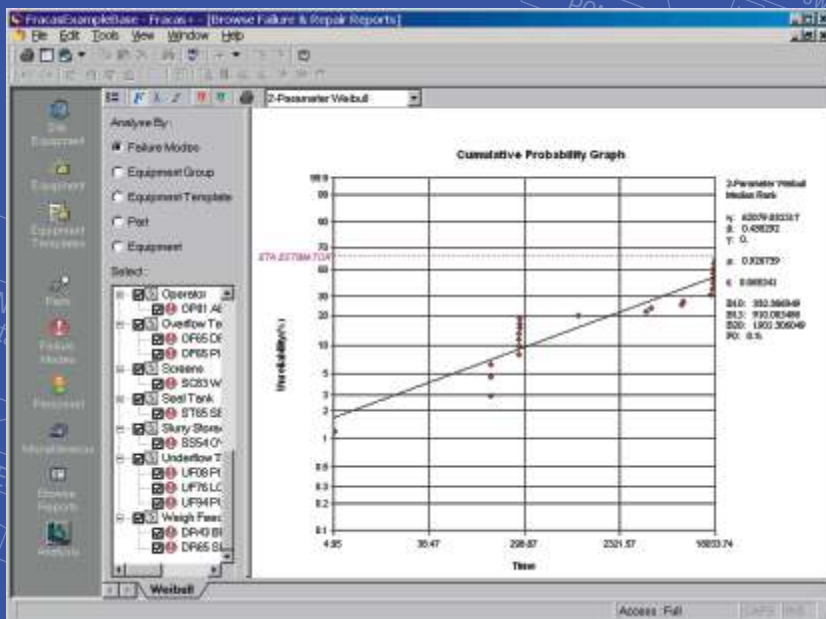
Once each piece of equipment in the system has been defined, an 'equipment functional location' node is assigned. Each movement of that equipment produces further nodes, allowing the historical location to be tracked throughout the lifetime of the equipment.

A full Audit Log can be activated within the program, to ensure that all updates, inserts or deletions to the project data are fully recorded. FRACAS+ also includes the functionality to generate automated E-mail notifications whenever any of these changes takes place. These powerful features ensure that all project changes can be tracked, to find out exactly who made the change and when.



Analyzing and Exporting Weibull Data

FRACAS+ contains a Weibull analysis module that can be used to provide failure data analytics from the project failure reports. The module assigns probability distributions which represent the failure characteristics of a piece of equipment. This analyzed data may then be used to optimize planned maintenance schedules, inspections and design changes using Isograph's powerful availability simulation and Reliability-Centered Maintenance software.



Comprehensive Reports and Result Visualization

Integrated into FRACAS+ is the ability to preview all the failure and repair reports using several different categorization methods in the Browse Reports data sheet. As well as this, FRACAS+ includes our Report Generator software that can be used to selectively display pertinent information and prepare customized reports for printing or directly transferring to external reports.

This powerful feature gives the user great flexibility to examine and report on any information that is deemed important. The Report Generator provides the capability for personalizing each report with headers, footers, text boxes and bitmaps.

Other Related Isograph Products

AvSim+ is a sophisticated Monte Carlo simulation package for analyzing system outages and costs, whilst allowing for complex redundancies.

RCMCost allows users to optimize scheduled maintenance policies using Reliability-Centered Maintenance techniques.

It employs Monte Carlo simulation techniques and uses a FMECA as the front-end.

FaultTree+ is a sophisticated fault and event tree program that uses analytical techniques for predicting the availability of systems with complex redundancies.

Reliability Workbench provides a dynamic link between its Prediction, Maintainability, FMECA and RBD modules and the FaultTree+ program.



Lockheed Martin Photo

Isograph

Isograph was founded in 1986 and is now one of the world's leading companies in the development and provision of integrated Reliability, Availability, Maintainability and Safety software products. The company headquarters is near Manchester, UK and there is also an office in Newport Beach, California.

The Isograph software products are well-proven in use at over 7000 sites worldwide, where they are used on many high profile projects. All of the Isograph software products are fully maintained and supported by a group of industry specialists. Training in the use of the software products is available at regular public courses or private on-site courses. Enhancements to the software products are largely driven by our user group community and associations with consultants and universities in the safety and reliability field.

Fault Tree Analysis - Availability Simulation - Prediction - FMECA - Reliability Block Diagrams



Life Cycle Costing - Markov Analysis - Hazop - Weibull - FRACAS - Network Availability



Isograph Inc 4695 MacArthur Court, 11th Floor, Newport Beach CA 92660, USA

Tel: +1 949 798 6114

Fax: +1 949 798 5531

e-mail: sales@isograph.com

Web: www.isograph-software.com

Isograph Ltd, The Malt Building, Wilderspool Park, Warrington WA4 6HL, UK

Tel: +44 (0)1925 437000

Fax: +44 (0)1925 437010

e-mail: sales@isograph.com

Web: www.isograph-software.com